



— NORDIC QUALITY

Prefabricated Homes

Healthier living in a welcoming home.

WWW.NORGESHUS.EU



— INTRODUCTION

About Norges Hus

Norges Hus Nova is an Estonian company specializing in the production and assembly of prefabricated timber-frame homes. We manufacture our houses in Estonia, Germany, Spain, and Portugal, adhering to European standards to ensure quality and reliability. Our services are available all over Europe, meeting the needs of clients across the continent.

All our homes can be customized to suit your specific needs, often with significant modifications. Our design and engineering teams are dedicated to supporting you throughout the entire process, from the initial concept to final execution.

We ensure that our homes meet the specific requirements and standards of each different country.

Introduction	02
Why choose us	04
How do we build and assemble	05
General features	06
Exterior walls	08
Interior	10
Ceiling construction	11
Roof construction	12
Windows and window doors	15
Services	16
Team Europe	17
Production	18
References	20
Gallery	22
Contact us	24

— WHY CHOOSE US

With Norges Hus Nova, you can bring the house of your dreams to life

Our houses are designed to be modern and functional. In addition to residential homes, we build single-family houses, row houses, and industrial buildings. Our projects also include commercial and public buildings, such as shops, offices, and clinics. We are capable of constructing almost any type of building based on our customers' needs and wishes. We continually strive to create spaces that are not only contemporary and environmentally friendly but also competitively priced.



Reasons for choosing a prefabricated timber home:

We believe it is possible to build strong, high-quality houses that meet the needs of our customers and quality standards at affordable prices. Every house is designed with care, skill, experience and impeccable quality.

- They have better earthquake resistance than traditional houses;
- They offer a high level of energy savings;
- With a good price to quality ratio, they offer greater value for money;
- The construction period is significantly shorter;
- They are fire resistant. In the event of fire only the first layer burns;
- They have larger useable floor space;
- They do not require any more maintenance than traditional homes;
- There is less waste, and the construction site is cleaner.



How do we build and assemble?

We are equipped with the very best precision machinery supplied by leading European manufacturers. However, we still place a great deal of importance on doing things by hand. This means that you can expect the utmost attention to detail and quality of the highest level.

All materials are strictly CE marked and sourced from the best European production firms.

All components of the house are loaded onto 40 t lorries inside the production facility to protect them from rain or snow.

With more than ten years of experience in building prefabricated houses, Norges Hus has all the skills required to deliver superior quality products and satisfy its clients.



Assembly

On site assembly of the timber structure is performed using a 30 t crane.



Team

A four person team can assemble a house in 7-14 days.



Clients

Clients obtain a high-quality dry timber structure, which, during the initial stages, can be modified internally.

— GENERAL FEATURES

What's included?

Delivery

The supply and assembly of the house components are provided for an unfinished building at an advanced stage of construction.

Windows

All the windows and patio doors are triple glazed with double cavity and have Class S profiles (as specified in standard EN 12608). They also have a very high radiation resistance value (12 GJ/m²), well above the limit stipulated by the standard.

Walls

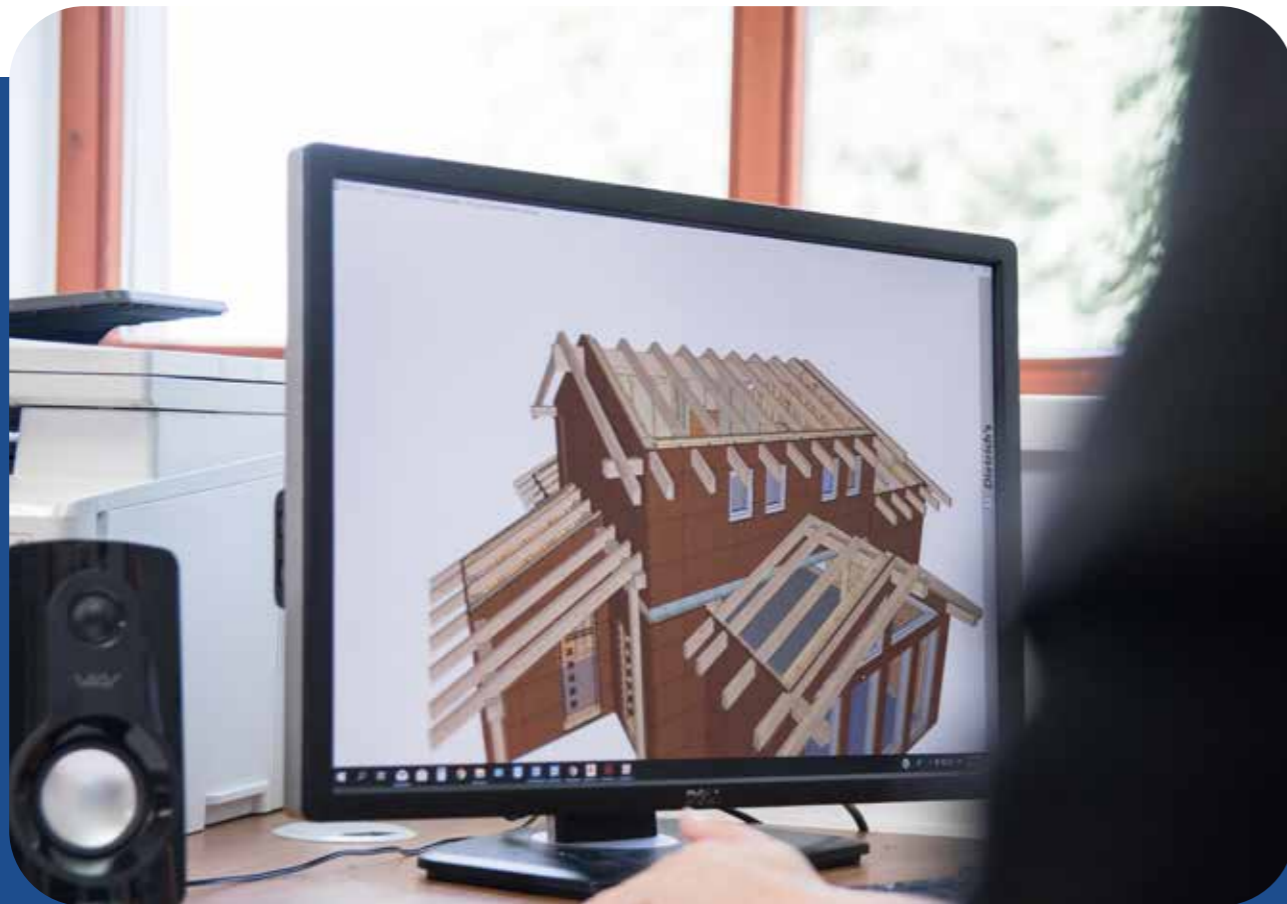
The framed external bearing wall structure is finished with either wooden cladding or STEICO Protect, offering a thermal performance coefficient equivalent to $U = 0.13 \text{ W/m}^2$.

Roof with exposed beams

The roof with exposed beams supplied has a thermal performance coefficient equivalent to: $U = 0.18 \text{ W/m}^2$

Warranty

Norges Hus offers a ten-year structural guarantee on all its houses.



Energy Rating

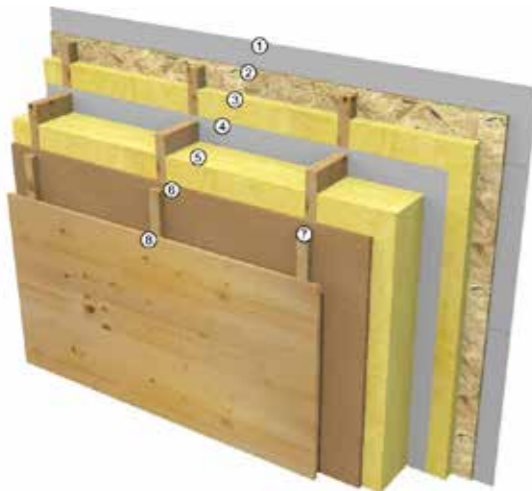
A virtually passive building with an energy rating of A+ or higher.

EXTERIOR WALLS

With wooden facade

U-value of the exterior wall: **U=0,14 W/m²K**

- Wooden cladding 21 x 145 UYVk Spruce AB rough-sawn - horizontal - Colour preference: to be determined by the client no later than the start of production.
- Air circulation chamber for ventilation
- 28x45 mm wooden counter-battens
- Breathable waterproof membrane 0.5 mm thick Riwega USB WALL 100
- Wooden post structure C24 - 200mm, wall height according to project
- Thermal insulation, total thickness 200 mm - ROCKWOOL / SUPERROCK
- Vapour barrier 0.2 mm



Schematic wall construction with wood facade:

Thermal protection

U = 0,14 W/(m²K)

EnEV Bestand*: U<0,24 W/(m²K)

excellent

insufficient

Moisture proofing

Drying reserve: 9677 g/m²a
No condensate

excellent

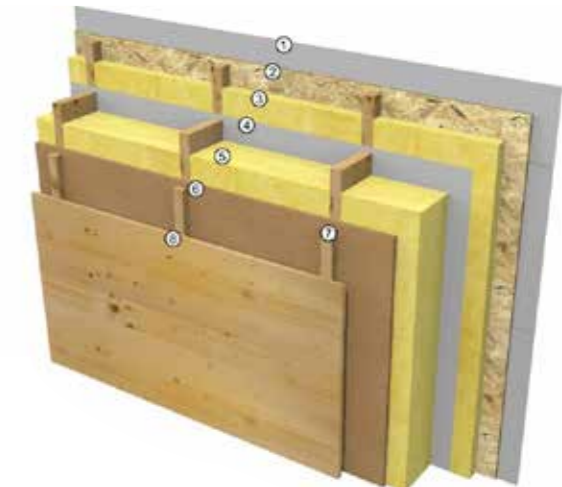
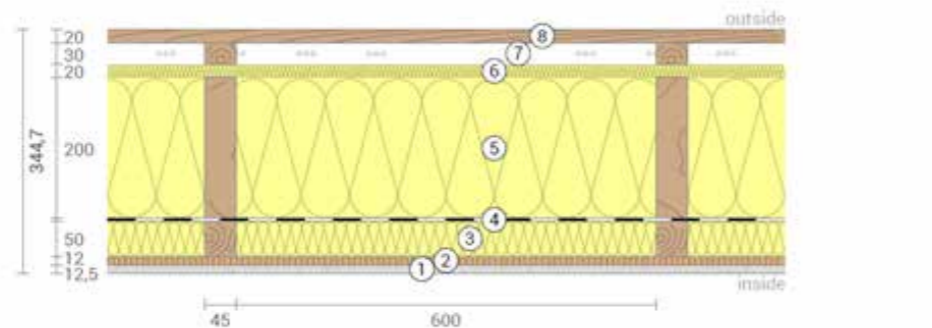
insufficient

Heat protection

Temperature amplitude damping: 13
phase shift: 7,9 h
Thermal capacity inside: 30 kJ/m²K

excellent

insufficient



With STEICO

U-value of the exterior wall: **U=0,13 W/m²K**

- 40mm STEICO WALL PROTECT + 12mm OSB Plates
<https://www.steico.com/en/products/etics/steico-render-carrying-boards/steico-etics-timber/steicoprotect/>
- Air circulation chamber for ventilation
- 28x45 mm wooden counter-battens
- Breathable waterproof membrane 0.5 mm thick Riwega USB WALL 100
- Wooden post structure C24 - 200mm, wall height according to project
- Thermal insulation, total thickness 200 mm - ROCKWOOL / SUPERROCK
- Vapour barrier 0.2 mm

Schematic wall construction with STEICO WALL PROTECT:

Thermal protection

U = 0,13 W/(m²K)

EnEV Bestand*: U<0,24 W/(m²K)

excellent

insufficient

Moisture proofing

Drying reserve: 274 g/m²a
No condensate

excellent

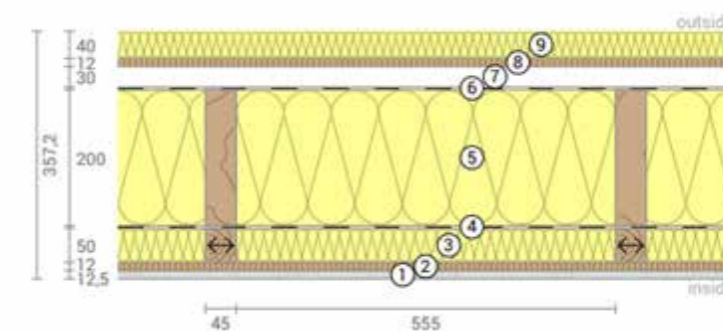
insufficient

Heat protection

Temperature amplitude damping: 21
phase shift: 11,2 h
Thermal capacity inside: 30 kJ/m²K

excellent

insufficient





INTERIOR

WALLS

SCOPE OF DELIVERY AND ASSEMBLY OF INTERIOR WALLS INCLUDE:

Structure of the walls with wooden posts 45 mm thick, of variable widths (95/145/195 mm) according to production drawings.



CEILING CONSTRUCTION

(for two-story houses including / for single-story houses available upon request for an additional fee)

SCOPE OF DELIVERY WITHOUT ASSEMBLY OF THE INTERMEDIATE CEILING INCLUDES:

- 18mm OSB-Plates (engineered wood)
- Wooden beams 240 mm with variable spacing according to the structural calculations.



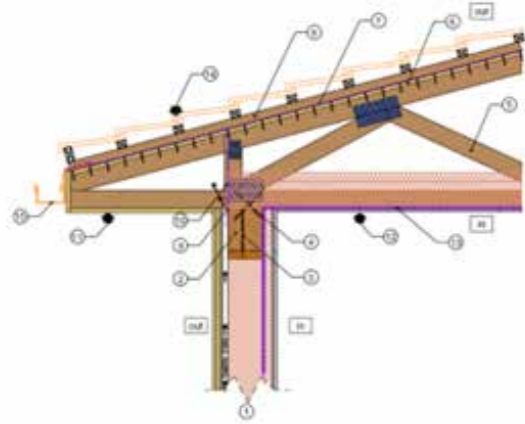
ROOF CONSTRUCTION

Roof trusses

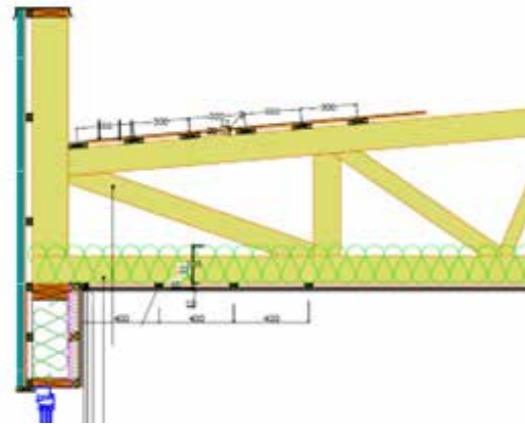
THE ON-SITE SUPPLY AND INSTALLATION OF THE STRUCTURE FOR THE CREATION OF THE ROOF INCLUDES:

- Roofs are calculated for Snow load 1.5KN/m²
- Roof trusses according to structural calculations – Roof angle according to project

Gable roof construction with roof trusses



Flat roof construction with roof trusses

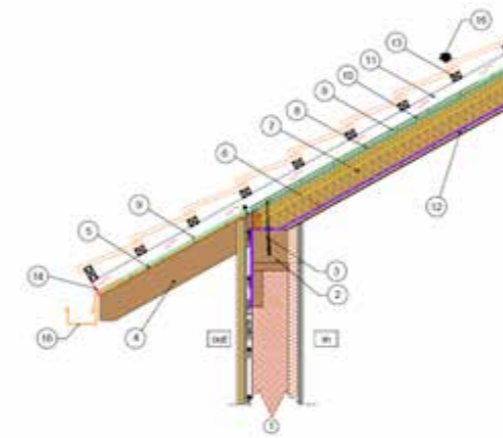


What is included in the price

- Wall construction
- Roof beams under roof trusses
- Fixing elements beams to wall
- Fixing elements roof trusses to beams
- Roof trusses according to structural calc.
- 18mm OSB-Plates (engineered wood)
- Breathable waterproof membrane / RIWEGA DO 135
- Wooden laths 28x45-mm + USB Tip KONT – BAND
- Breathable waterproof membrane – in Wind boxes

What is NOT included in the price

- Wood to cover beams
- Wood for wind boxes
- Ceiling cover materials – OSB and Gypsum
- Insulation for roof
- Roof cover material and wooden laths for roof material
- Water drainage



Lamellar beams - Rafters

THE ON-SITE SUPPLY AND INSTALLATION OF THE STRUCTURE FOR THE CREATION OF THE ROOF INCLUDES:

- Roofs are calculated for Snow load 1.5KN/m²
- Rafters according to structural calculations – Roof angle according to project
- Supporting beams according to structural calculations

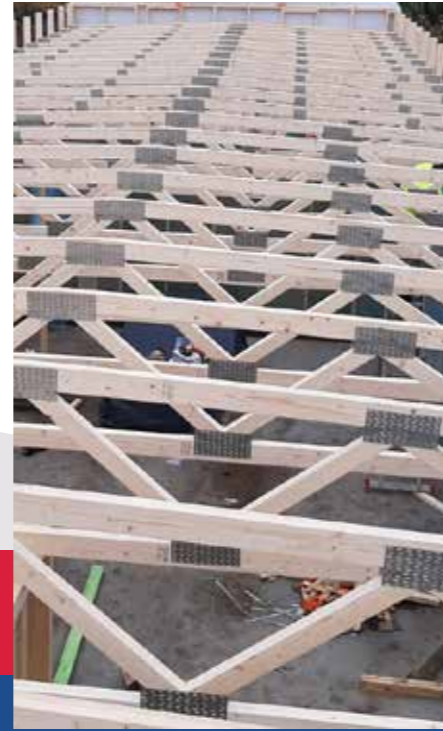
What is included in the price

- Wall construction
- Roof beams under rafters
- Fixing elements beams to wall
- Fixing elements rafters to beams
- Roof construction according to structural calculations
- 18mm OSB-Plates (engineered wood)
- Breathable waterproof membrane / RIWEGA DO 135
- Wooden laths 28 X 45-mm + USB Tip KONT – BAND
- Breathable waterproof membrane – in Wind boxes

What is NOT included in the price

- Wood to cover beams
- Wood for wind boxes
- Ceiling cover materials – OSB and Gypsum
- Insulation for roof
- Roof cover material and wooden laths for roof material
- Water drainage

Gallery



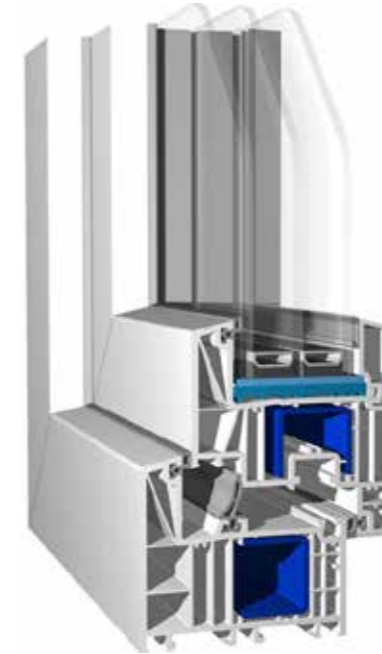
All windows and window doors

The price includes the items windows and patio doors – from the window specification. Entrance doors, side entrance doors, sliding doors and windows, as well as roof windows, are not included in the price.

WINDOWS AND PATIO DOORS INCLUDE:

Brüggmann bluEvolution: 82 or similar (PVC), color White – Different colors for extra price.

- Triple glazing with double cavity
- Class S profiles
- Radiation resistance coefficient equivalent to 12 GJ/m²
- Thermal performance coefficients
 - U_w value = up to 0.50 W/(m²K)
 - U_f value = 0.95 W/(m²K)



WINDOW DOORS HIGHER THAN 210 WILL BE SUBJECT TO A SURCHARGE - sliding doors / sliding windows, roof windows are not included in the price.

Included in the price are positions A and TU – from windows specification.

Positions: VU and LU are not included in the price. Roof windows are not included in the price.

PVC, in white or in a colour selected from our catalogue – colour windows costs extra.

Windows assembly:

Fixed only with clips.

Not taped, without window mouldings, without windows sills.



List of technical services and services included with the supplies

OUR TECHNICAL STUDY INCLUDES THE FOLLOWING SERVICES AS PART OF THE SUPPLIES:

1.

PLANS

House plans in PDF and DWG file formats.

2.

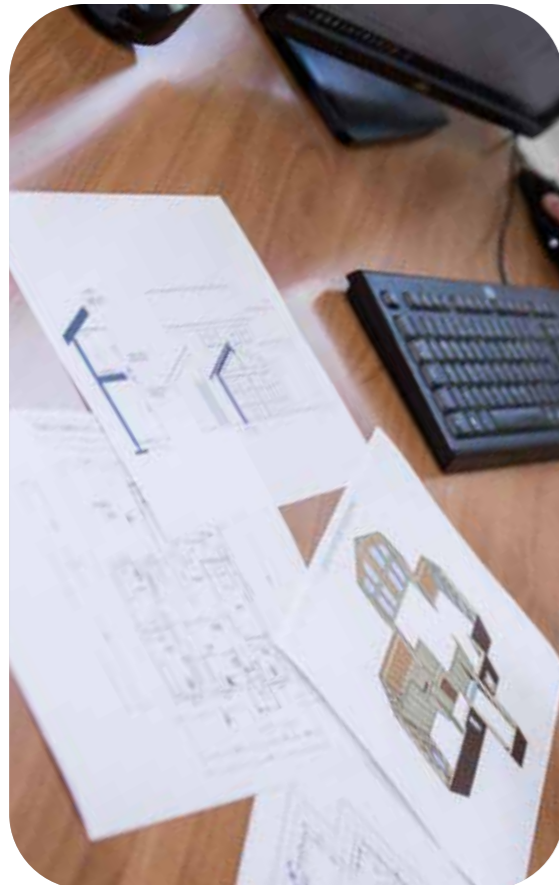
DRAWINGS

Technical package of construction drawings.

3.

CALCULATIONS

Structural calculation of the house.



List of technical supplies and services not included

THE FOLLOWING ARE NOT INCLUDED IN THE SUPPLIES AND ARE THEREFORE THE RESPONSIBILITY OF THE CLIENT:

- Cranes – Customer need to order crane for unloading the trucks and construction works.
- Foundation slab according to NorgesHus technical drawings
- Scaffolding and portable ladders
- Plugging of openings and perimeter walls before finishing coat
- Where it is not possible for articulated trucks to access the construction site, transport from the nearest accessible unloading point to the site is the responsibility of the client.
- Disposal of site waste
- Everything not explicitly specified in the sections set out in this offer.

Quality and Technology



— PRODUCTION

Prefabricated houses

Prefabricated houses are not a new concept, these houses have been built for decades and they are an efficient way to create and transport housing. Previously, however, the majority of prefabricated houses were boxy and standardized – although they were a great practical option, they left very few creative opportunities to the owners.

Norges Hus Nova OÜ saw the potential of prefabricated homes, and strived to develop a solution that offered homeowners as much creative control as they would get if designing a non-prefabricated home. With a dedicated team of architects and designers, we are able to work with our clients and bring their ideas to life, helping them to create their perfect homes.



Skills

The structure of our timber-frame houses has been developed taking into consideration the specific climatic requirements and building rules in Norway. We use only high quality solid construction timber.

Experience

We understand that combining good, cost-effective building science with the right products and materials can help create a home that's healthier and more efficient – while being kind to the environment.

Quality

With over a decade of experience in home building, Norges Hus has what it takes to provide quality products, quality construction and customer satisfaction.

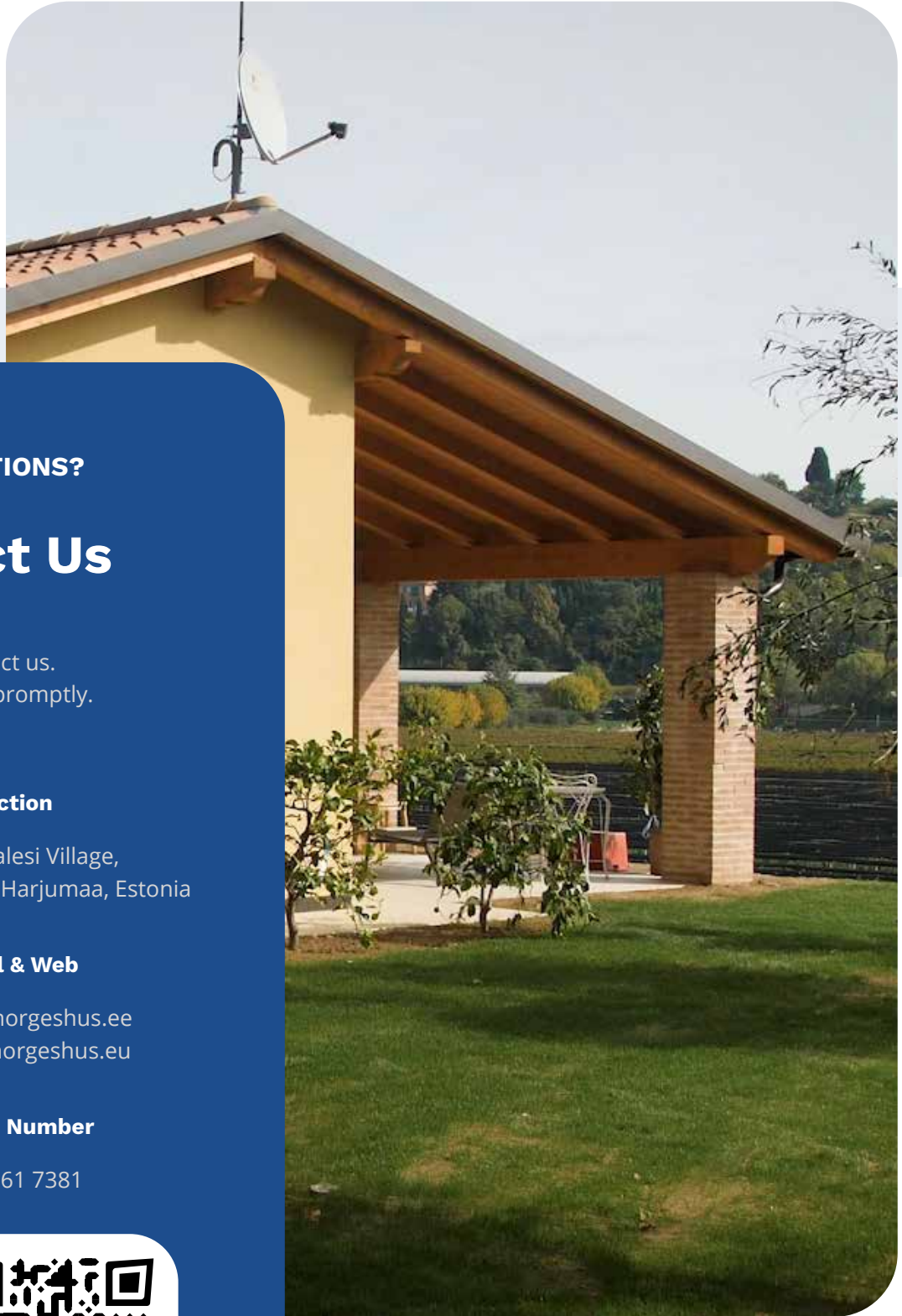


Projects in progress



Prefabricated houses gallery





— QUESTIONS?

Contact Us

Feel free to contact us.
We will respond promptly.



Production

Lao, Kalesi Village,
75201 Harjumaa, Estonia



E-mail & Web

info@norgeshus.ee
www.norgeshus.eu



Phone Number

+372 661 7381

